

Analysis of NASDAQ-100 Volatility Data

Comparison of VXN Index with GARCH Model

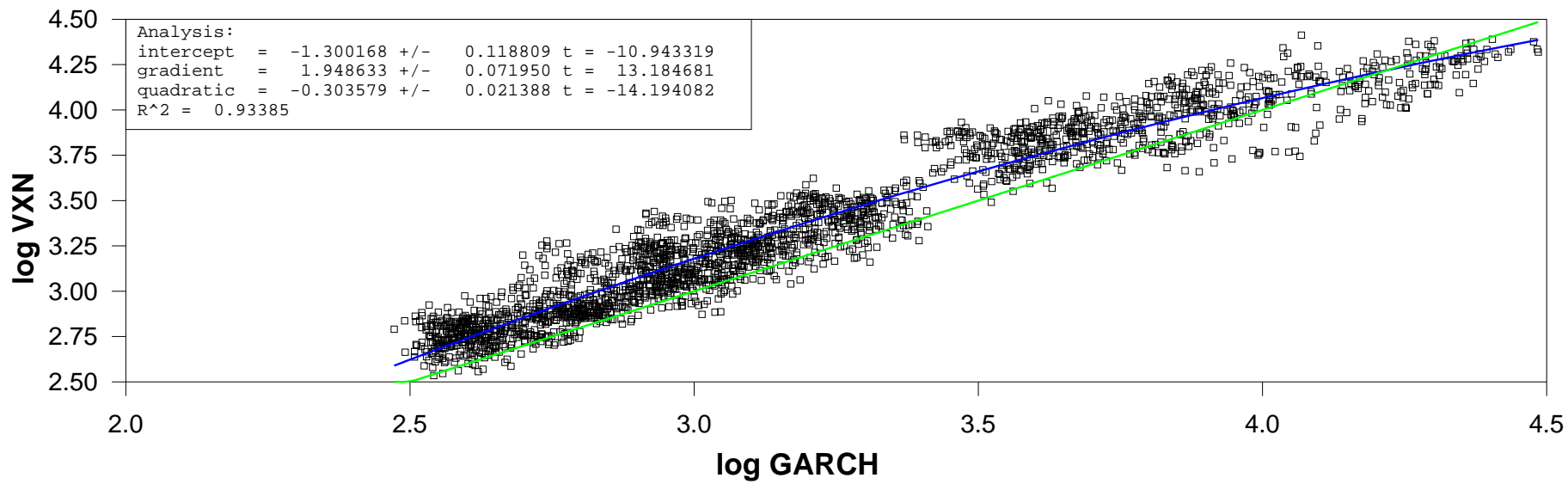
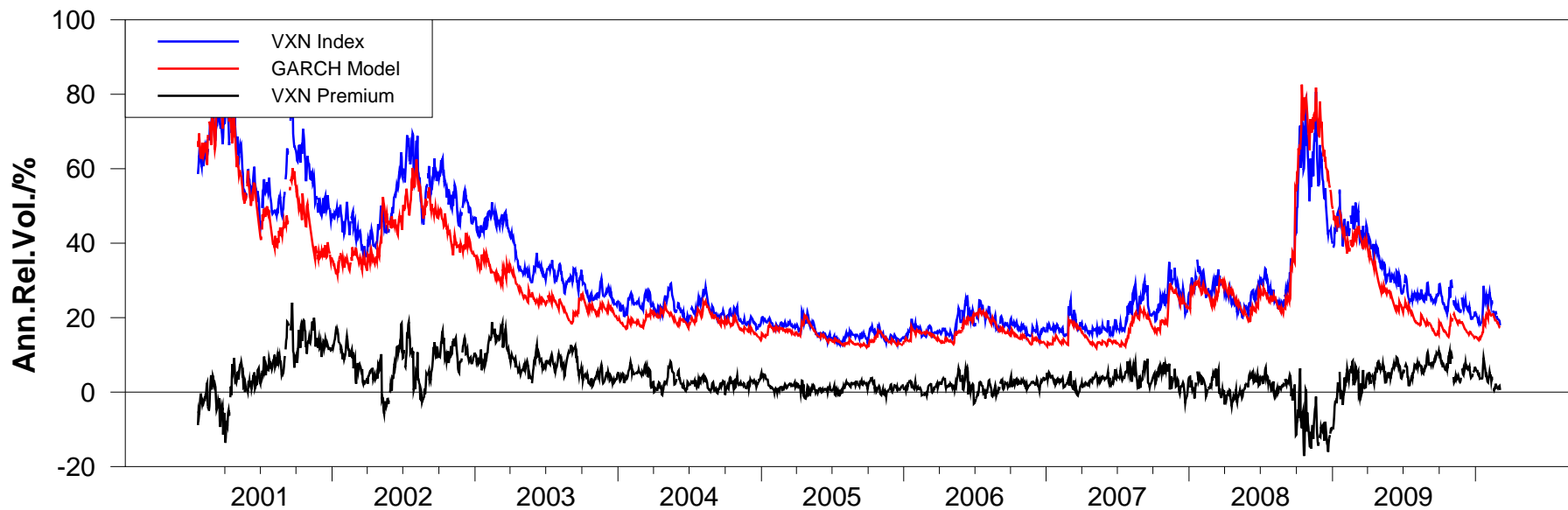


Chart prepared on 03/05/2010 13:56 for Giller Investments (New Jersey), LLC. <http://blog.gillerinvestments.com>

Chart prepared by Graham Giller for Giller Investments (New Jersey), LLC on 2010:03:05
<http://blog.gillerinvestments.com>